

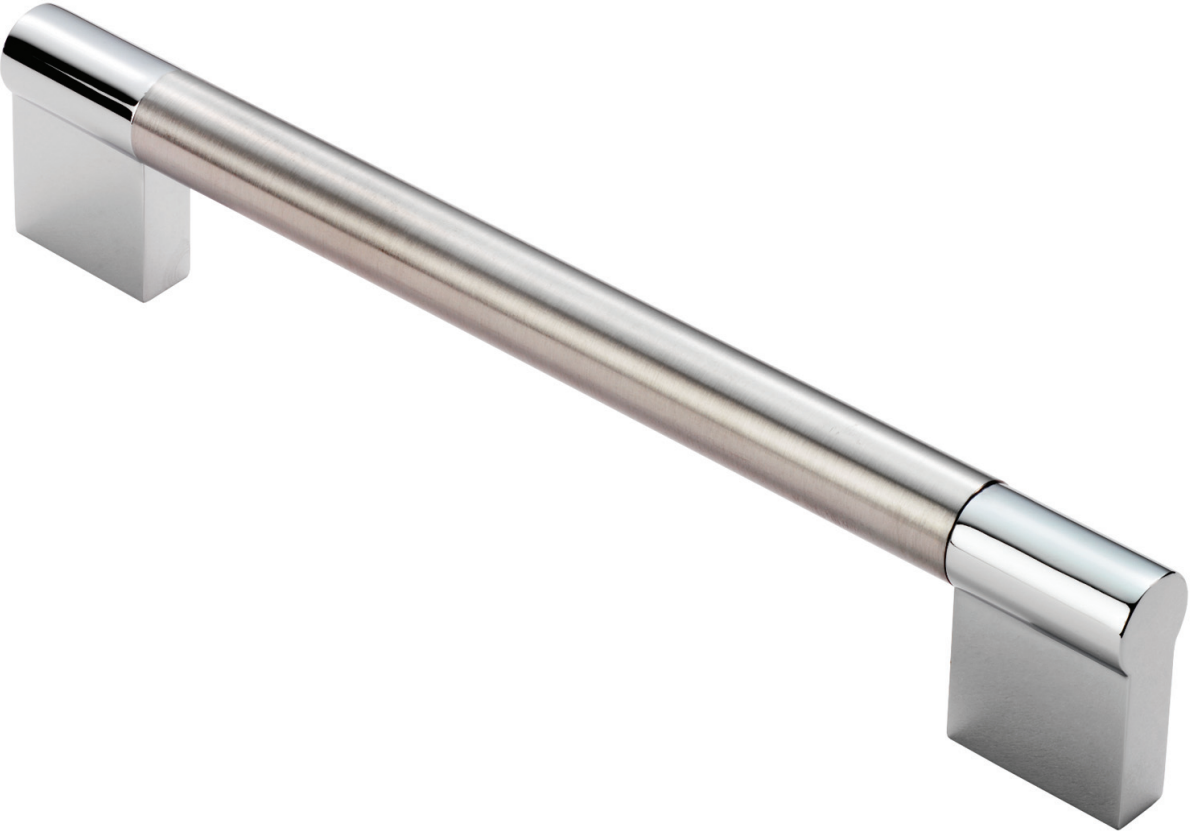


## Keyhole Handle

**Product Images**

---





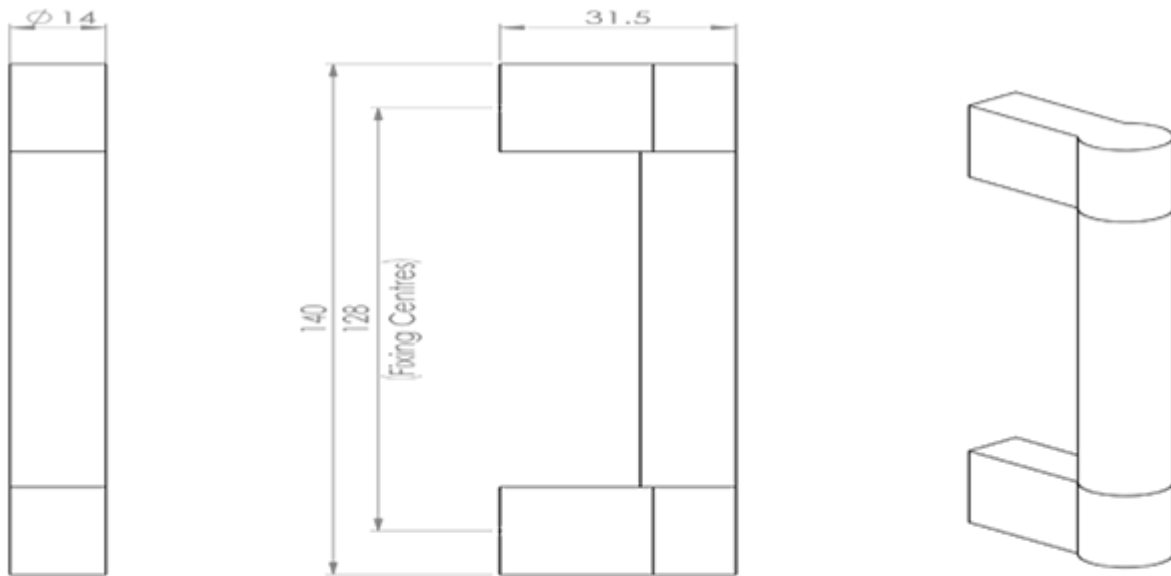
## Description

---

Keyhole handle so called due to the keyhole shaped end supports which hold the straight round bar handle. The design benefits from the contrast in the split finish, nicely offsetting the components. Available in different sizes.

## Technical Details

---



**FTD470B**

This drawing is the property of Carlisle Brass Limited, all design rights reserved

## Additional Information

---

Short Description	Satin Nickel/Polished Chrome
SKU	FTD470
Brands	Fingertip
Line Drawings	FTD470B.PDF,FTD470C.PDF,FTD470D.PDF,FTD470E.PDF,FTD470J.PDF,FTD470L.PDF

## Product Options

---

Sizes:	128mm Centres, 140mm Overall, 32mm Projection, 12mm Dia. Bar
	576mm Centres, 588mm Overall, 32mm Projection, 12mm Dia. Bar
	448mm Centres, 460mm Overall, 32mm Projection, 12mm Dia. Bar
	224mm Centres, 236mm Overall, 32mm Projection, 12mm Dia. Bar
	192mm Centres, 204mm Overall, 32mm Projection, 12mm Dia. Bar
	160mm Centres, 172mm Overall, 32mm Projection, 12mm Dia. Bar

