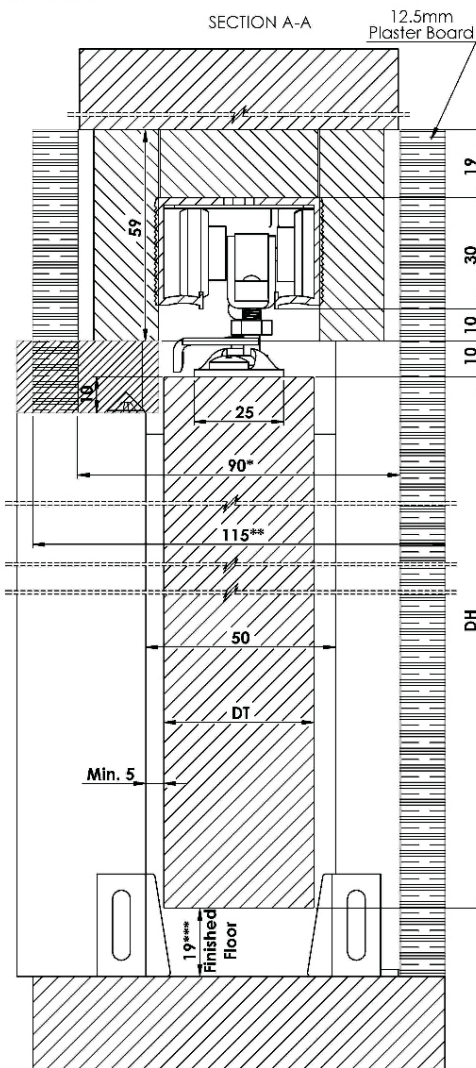


HIDEAWAY™ SERIES POCKET DOOR SYSTEM ASSEMBLY INSTRUCTIONS

HIDEAWAY

Maximum door weight 90kg



*Add 5mm if widening kit is used, 95mm Hideaway Kit thickness

**Add 5mm if using widening kit, 120mm finished wall thickness

***Allows for carpet and underlay, add extra 26mm for subfloor

****See 61911-Guide for more details and options

DH - Door height, maximum 2743mm

DWi - Door width, maximum 1524mm

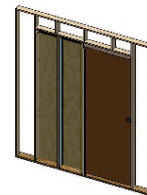
DT - Door thickness, Maximum 35mm without adaptor kit
Maximum 44mm with adaptor kit
Maximum 50mm with cavity widening kit

OW - Opening width

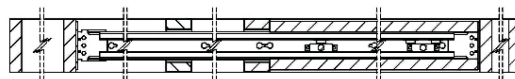
OH - Opening height

NOTE:
For door over 35mm widening kit **MUST** be used.

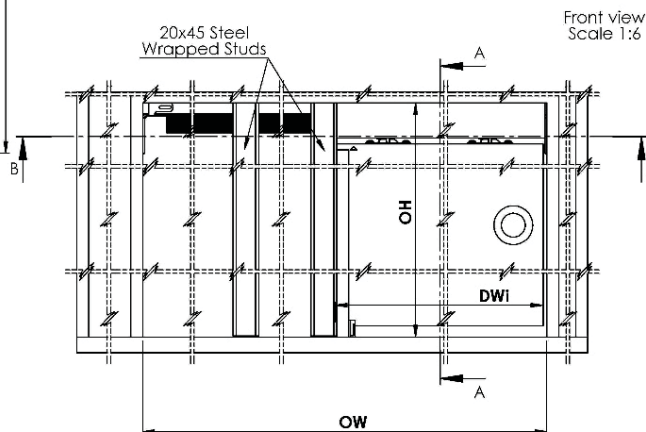
Available Sets				
Part No.	Item Code	Maximum Door Width	Maximum Door Height	Maximum Door Weight
61730	H30	760mm	2040mm	56kg
61736	H36	915mm	2040mm	56kg
61742	H42	1067mm	2040mm	90kg
61842	H42A	1067mm	2743mm	90kg
61848	H48A	1219mm	2743mm	90kg
61854	H54	1371mm	2743mm	90kg
61860	H60A	1524mm	2743mm	90kg



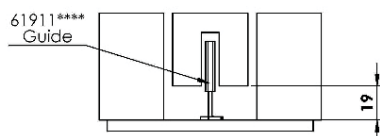
SECTION B-B
Scale 1 : 6



Front view
Scale 1:6



Side view with alternative bottom guide
Scale 1:2



**PRODUCT RANGE
(UK IMPERIAL SIZES)**

MADE FOR 50mm X 100mm STUD WALLS

Available Sets

Part No.	Item Code	Maximum Door Width	Maximum Door Height	Maximum Door Weight
61730	H30*	760mm	2040mm	56kg
61736	H36*	915mm	2040mm	56kg
61742	H42*	1067mm	2040mm	90kg
61842	H42A	1067mm	2743mm	90kg
61848	H48A	1219mm	2743mm	90kg
61854	H54	1371mm	2743mm	90kg
61860	H60A	1524mm	2743mm	90kg

IMPORTANT!

Opening height must be measured from finished floor level (taking account of any flooring)
Opening must be square, plumb with studs and level.

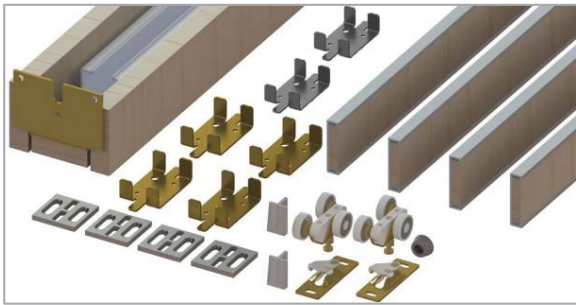
Door meeting require 2 kits and the 61600 jointing kit

Note!

Instructions are for a 2032mm door, if door is shorter, lower header and cut bottom ends of Split Studs.

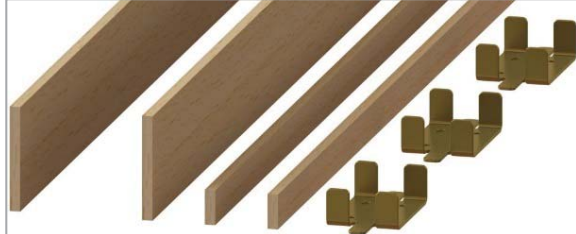
All purpose frames, marked to cut to shorter length

CONTENTS

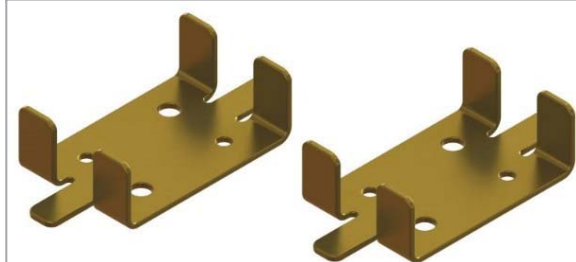


61730/736/742/842/848/854/860 – POCKET DOOR KIT

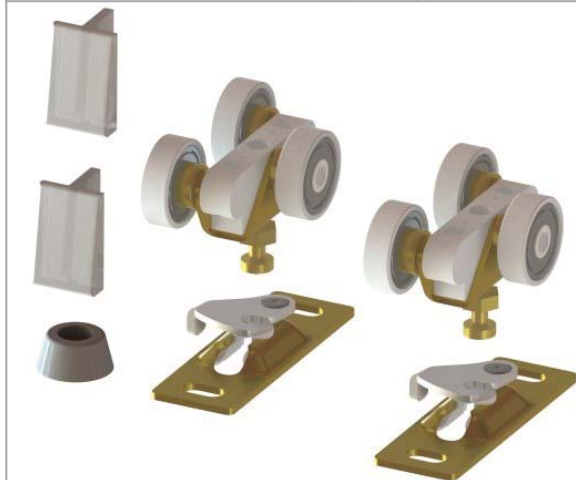
ACCESSORIES



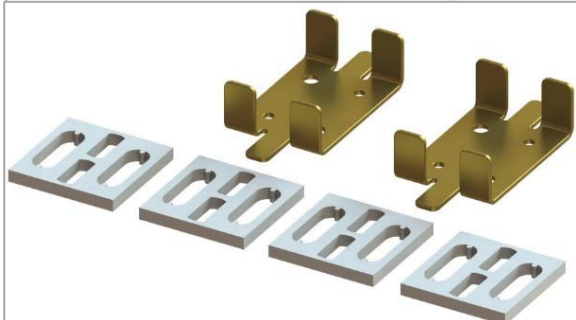
61601 –CAVITY WIDENING KIT (UP TO 50mm THICK DOORS)



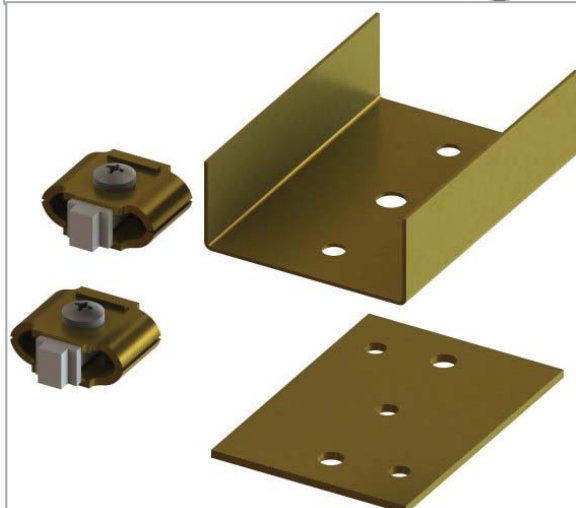
61602 –CAVITY WIDENING PLATES, (UP TO 50mm THICK DOORS)



61700 – COMPONENT KIT



61900 – ADAPTOR KIT (UP TO 44mm THICK DOORS)



61600 – JOINTING KIT

ACCESSORIES



61604 – HANGER, 56kg



61607 – HANGER, 90kg



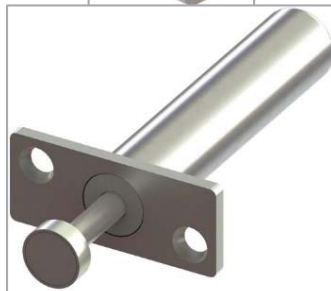
61606 – DOOR STOPS (5pcs), DOOR MOUNTED



61611 – DOOR STOP, TRACK MOUNTED



61910 – BOTTOM GUIDE



95604 – POCKET DOOR 'HOLD OPEN' PISTON



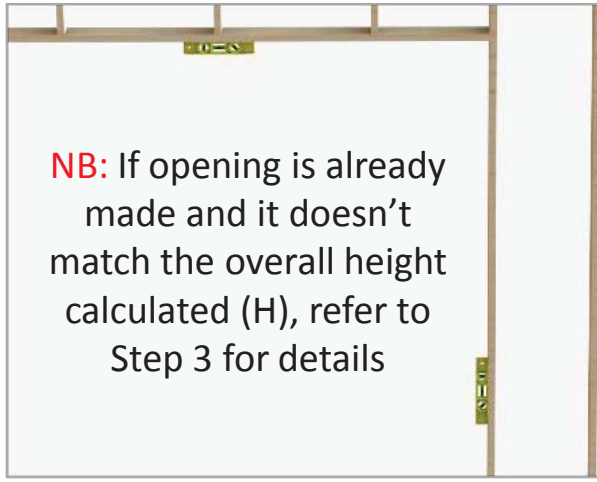
30620 – SOFT CLOSER KIT, 90KG

30621 – SOFT CLOSER KIT, 60KG

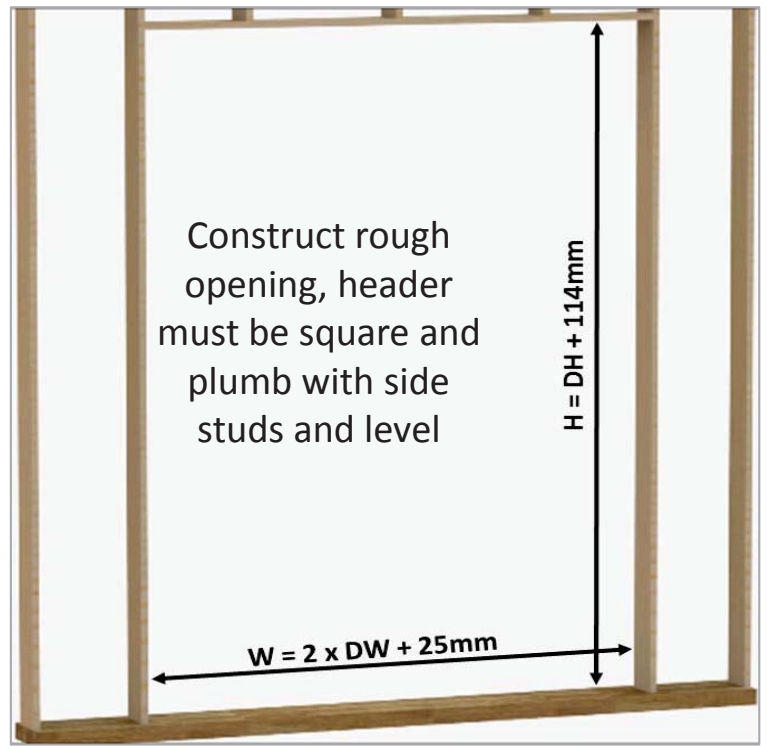


61421 – SIMULTANEOUS OPERATOR KIT
1000mmX1000mm

Step 1 Opening preparation



$H = DH + 114\text{mm}$
 $H = \text{Overall Height}$
 $DH = \text{Door Height}$



$W = (2 \times DW) + 25\text{mm}$

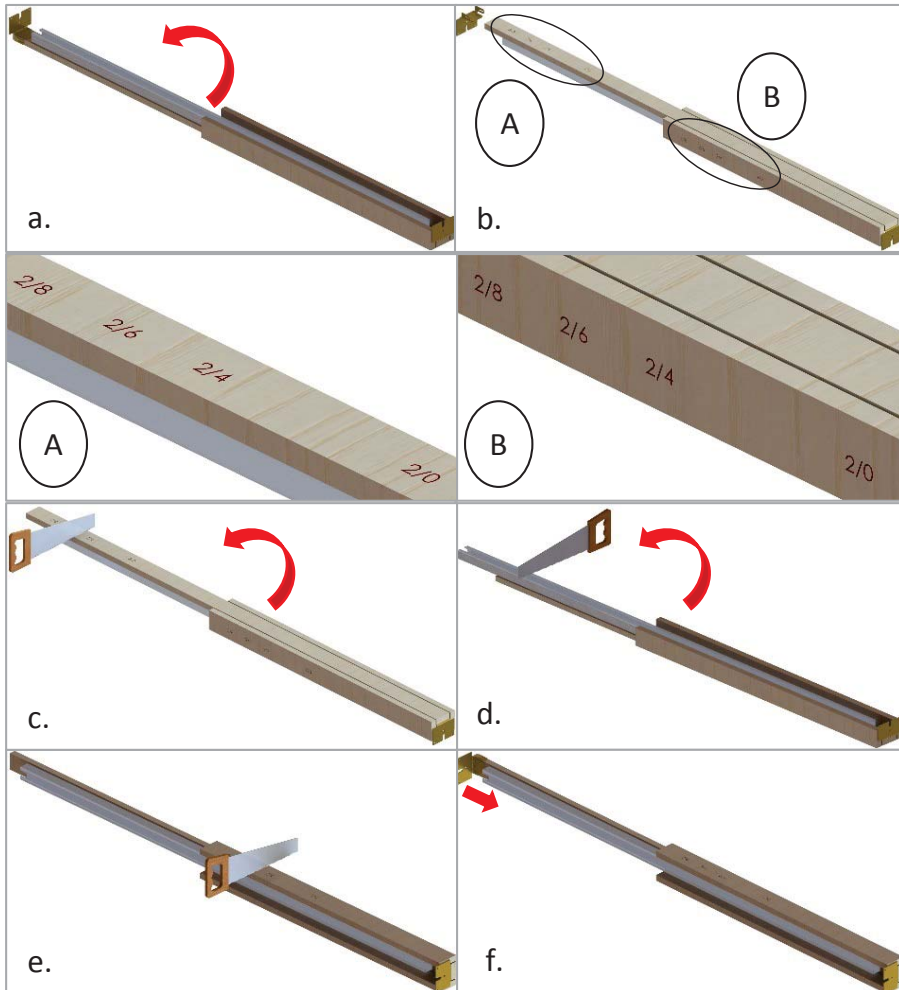
$W = \text{Opening Width}$

25 = Is required for door jamb + door bumper

114 = 26mm for subfloor + 59mm for track/header + 10mm gap between door and track + 19mm gap between door and finished floor (allows for carpet underlay)

NB: If measurement is made from finished floor do not add 30mm in the overall height

Step 2 Prepare track / header



- Take the track/header and place it on a flat surface with the wooden head facing down;
- Remove end bracket and turn the header over;
- Cut the wood header ONLY, at desired door size, use markings. DO NOT CUT THE TRACK;

$2/8 = 810\text{mm} (32'')$

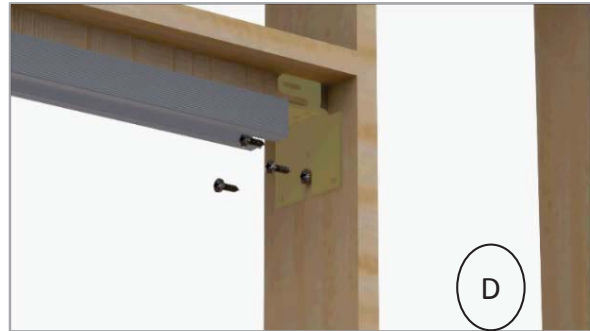
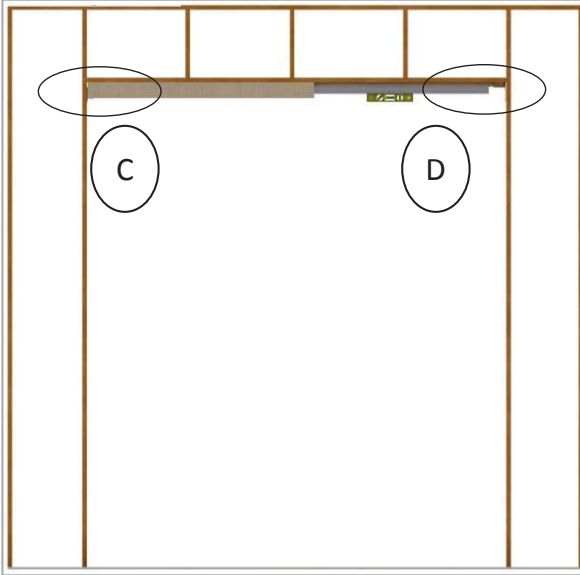
$2/6 = 760\text{mm} (30'')$

$2/4 = 710\text{mm} (28'')$

$2/0 = 610\text{mm} (24'')$

- Turn the assembly with the wood head facing down and cut the aluminium track 35mm shorter than the wooden header;
- Turn header on the side and cut the trim board ONLY, on each side at door size, use markings;
- Put back the end bracket at the end of the wooden head.

Step 3 Position the track / header



Insert the track into opening and but the header to the top of the opening this will give 12-30mm clearance under floor.

Fix the track into one screw on each side and level the track.

After ensuring the track is levelled secure the end brackets with screws.

NB: If opening is already made and it doesn't match the overall height calculated (H) then measure from the finished floor the door height + a minimum of 19mm to a maximum of 38mm

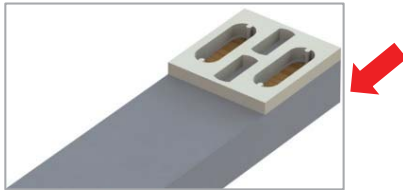
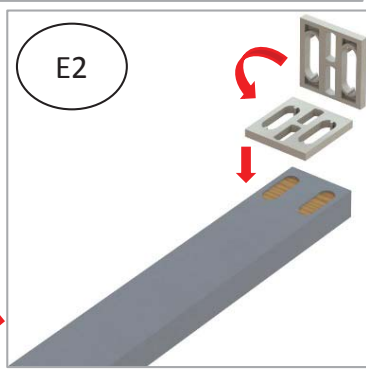
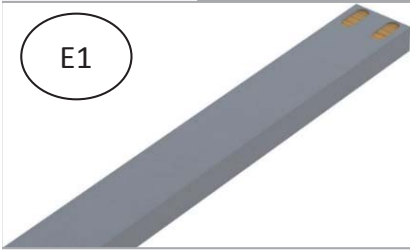
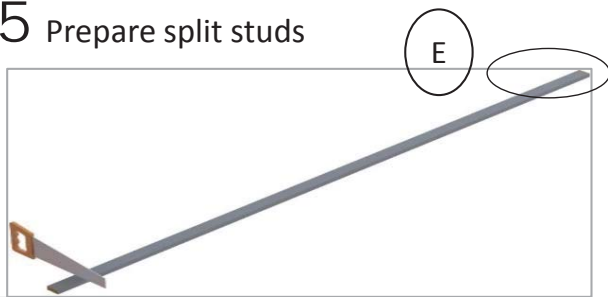
NB: If opted for a simultaneous operator please refer to the instructions provided with it.

Step 4 Mark the floor



Make a straight chalk line on each side of the side studs to help define the pocket edges.

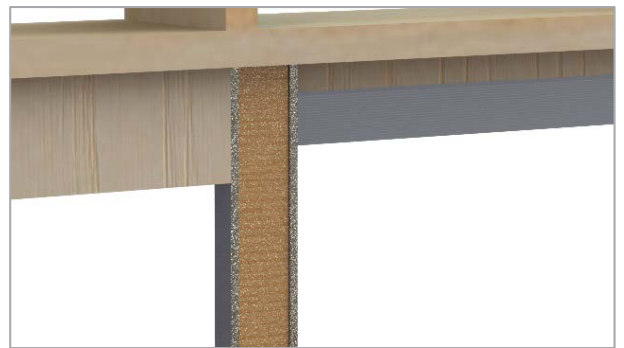
Step 5 Prepare split studs



Cut the split stud at the overall height (H), DO NOT USE PLASTIC SPACERS.

For doors over 38mm up to 44mm install the plastic spacers, supplied in a plastic bag. Insert the pins from the plastic spacer into slots located on the split studs on the metal side, as shown above (E2).

NB: If opted for a cavity widening kit please refer to the instructions provided with it.



Place a split stud on the track and butt it up to the head, pre-drill and countersink holes for fixing screws, in the wood header NOT THE TRACK. Repeat the step for all the split studs.

NB: If using adaptor kit place nylon spacers before placing stud

Step 6 Installing split studs overview

If kit supplied has 4 split studs, the first set of 2 will be placed on the track and butted up to the head.

The remaining set will be placed on the track and equally spaced between the first set and the side stud.

NB: The face with the timber exposed MUST be facing out.



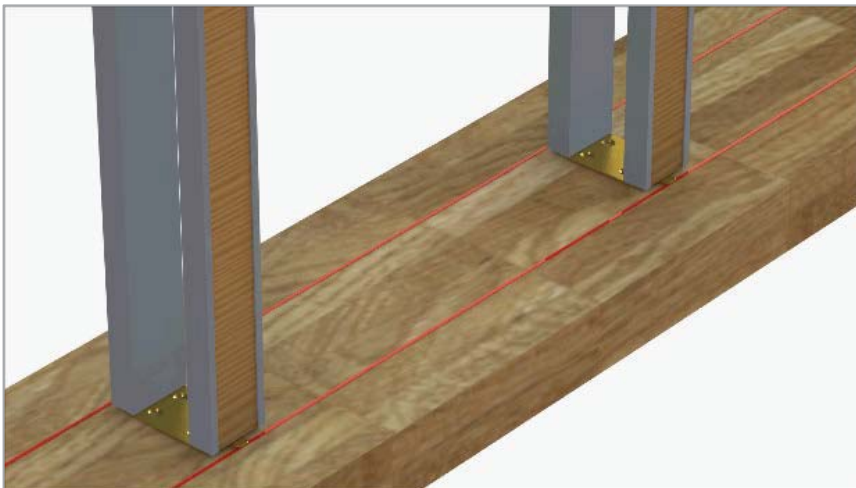
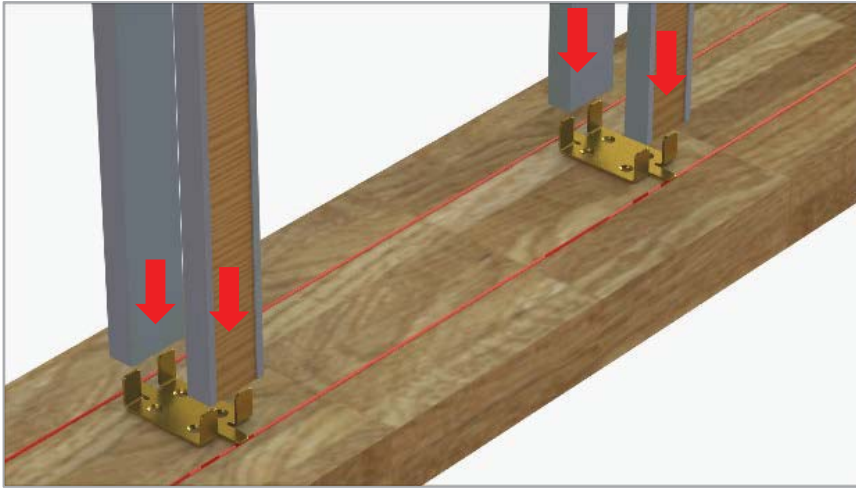
If kit supplied has 6 split studs, the first set of 2 will be placed on the track and butted up to the head.

The remaining 2 sets will be placed on the track and equally spaced between each other, the first set (already installed) and the side stud.

NB: The face with the timber exposed MUST be facing out.



Step 7 Fixing split studs into floor plate



NB: For doors up to 38mm use the plates that are inside the box and not sealed in the plastic bag

NB: For doors over 38mm up to 44mm use the plates from the plastic bag, for wider doors a widening kit **MUST** be used.

Slip floor plate fingers into split studs.

DO NOT FIX THE PLATE TO THE FLOOR.

NB: If opted for a widening kit please refer to the instructions provided with it.

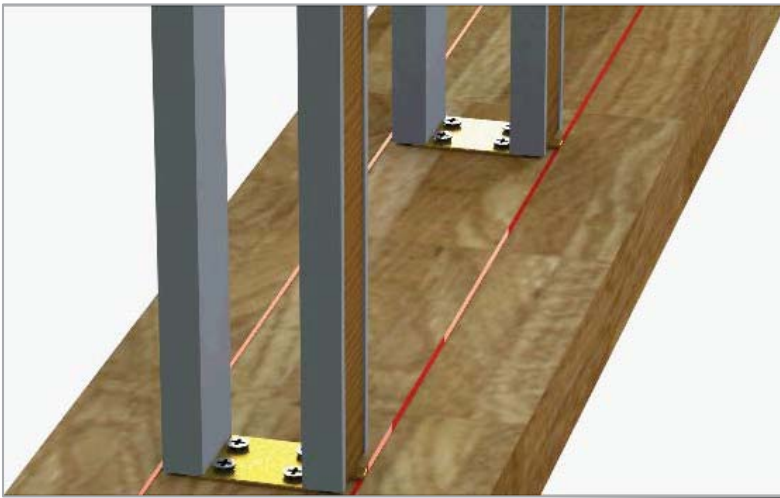
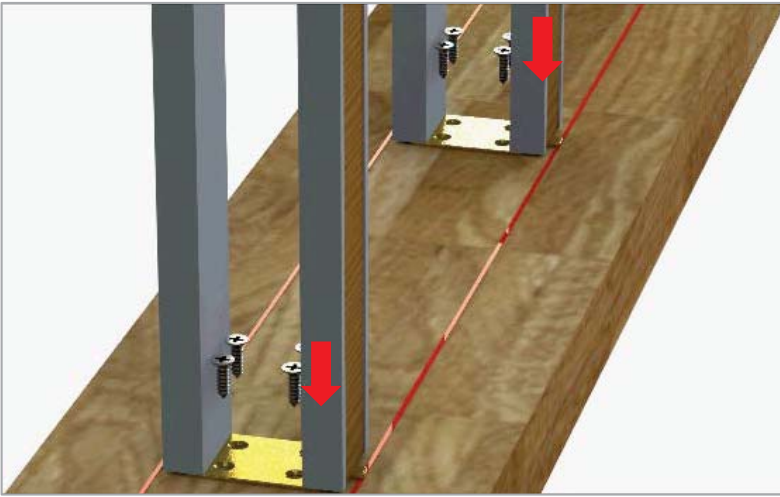
Step 8 Fixing split studs onto track



Fix the first set of split studs by butting them to the header and the track, make sure they are in a levelled position, and fix them with screws.

Fix the second pair of studs by butting them to the track equally spaced between the first set and the side stud, make sure they are in a levelled position and fix them with screws.

Step 9 Fixing floor plates to floor



Ensure studs are levelled (on the front and on the side). To double check if everything is levelled the floor plate must be located in the middle of the chalk lines.

Secure the floor plate with screws.

Step 10 Door preparation: installing hanger plates

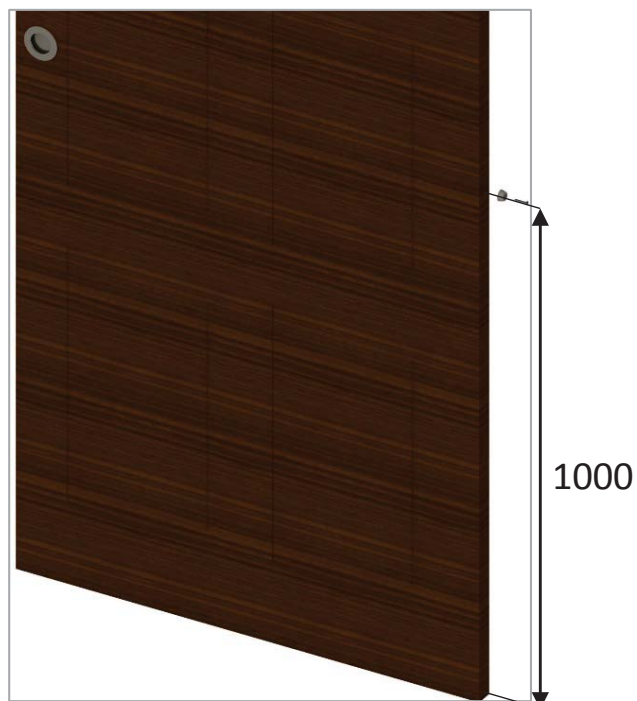
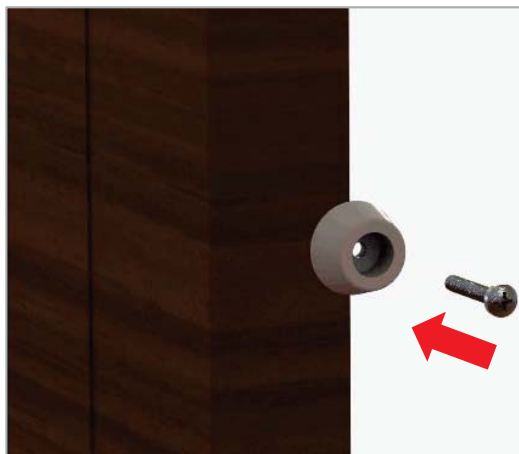


Attach the door plates on the top of the door at 50mm from the edges.

NB: The lock tabs **MUST** be on the same side

If opted for a soft closer or a simultaneous operator please refer to the instructions provided with it.

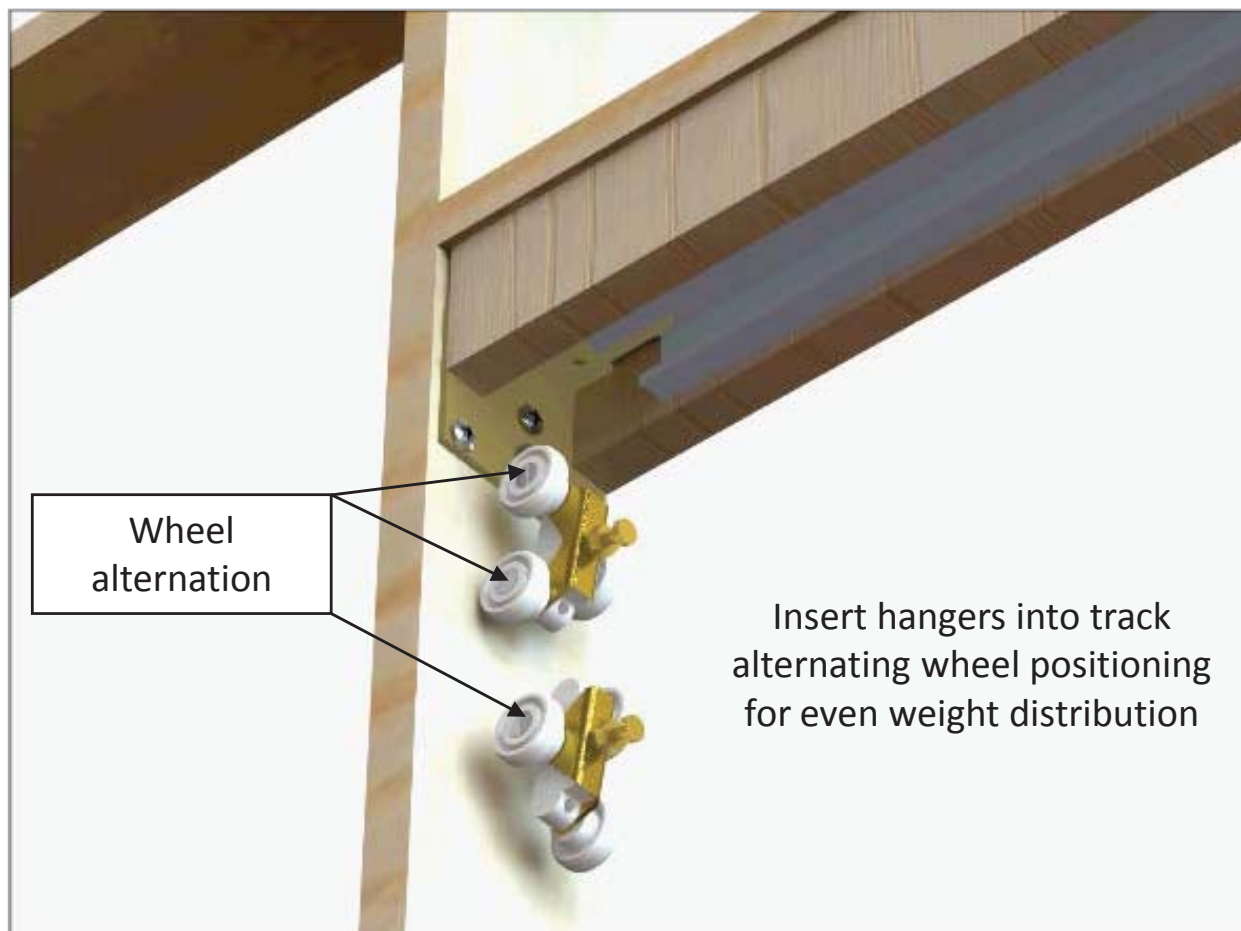
Step 11 Door preparation: rear bumper



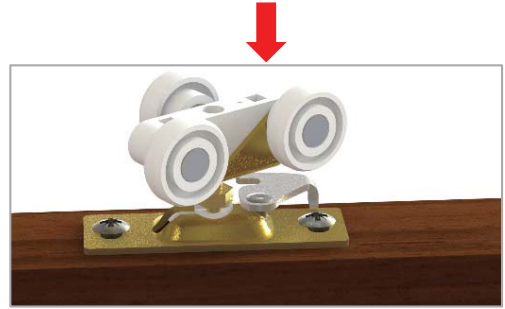
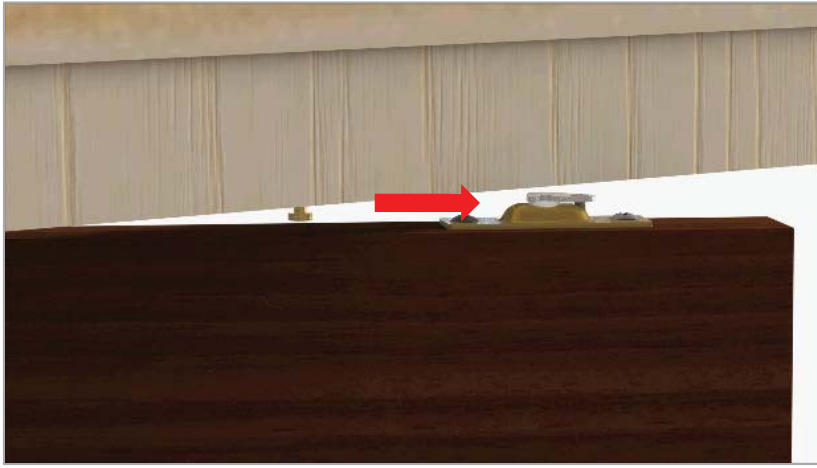
Attach bumper at the back of the door at 1000mm from the bottom.

If opted for a holdback piston please refer to the instructions provided with it.

Step 12 Insert hangers into track



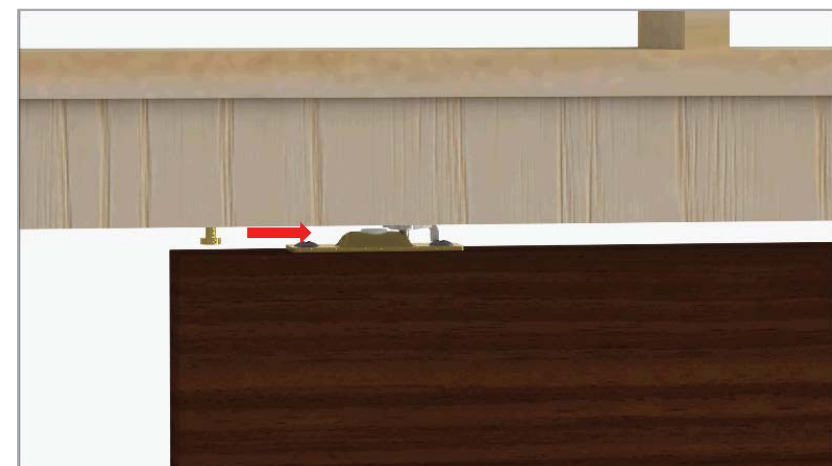
Step 13 Door installation



Mount the hanger closer to the pocket first.

Insert the hanger pin into door plate slot.

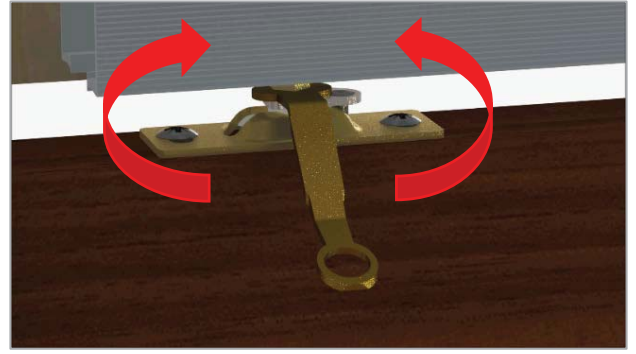
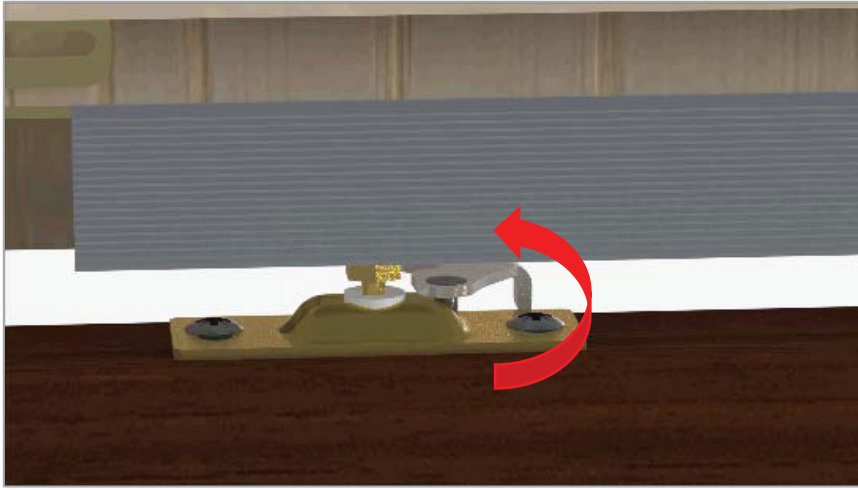
Step 14 Door installations



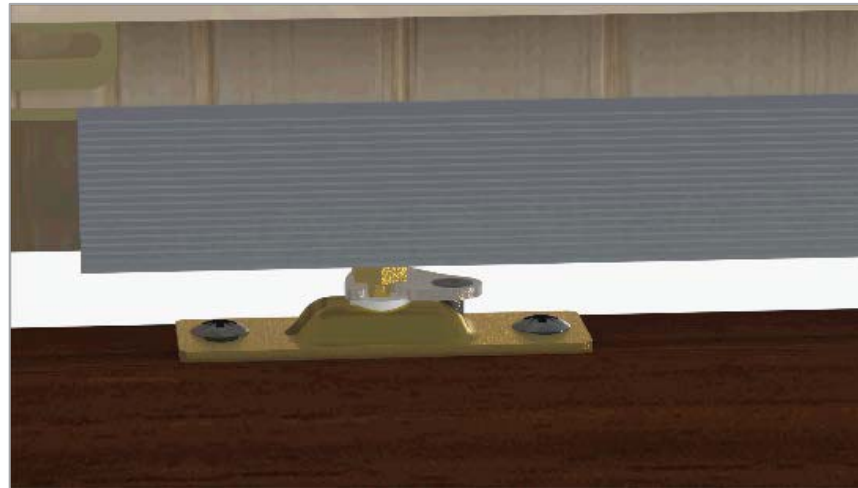
Slide the door inside the pocket to ease mounting the second door plate.

Insert hanger pin into the second door plate slot.

Step 15 Secure hanger pins



After pins are fully inserted into door plates secure them by rotating the lock tab into locked position.



After securing the pins adjust the height of the door, using the special spanner supplied, by rotating left and right the hanger bolt

Step 16 Install bottom guides



Apply desired wall material. Wall material is brought clear to edge of opening.

WARNING: Use screws no longer than necessary. Screws must not protrude into pocket or door will be damaged.

To provide a firm nailing surface, slip a 54mm wide board between split studs temporarily.

After installing the architrave (NOT SUPPLIED BY COBURN), install the bottom guides.

Adjust height to ensure door is central in pocket.

NB: If opted for a different guide please refer to the instructions provided with it.



HIDEAWAY™ SERIES

Fitting instructions



Coburn Sliding Systems Limited

Unit 1, Cardinal West,

Godmanchester, PE29 2XN, United Kingdom

Phone: +44 (0)20 8545 6680

Fax: +44 (0)20 8545 6720

E-mail: sales@coburn.co.uk

www.coburn.co.uk