

Rack and pinion

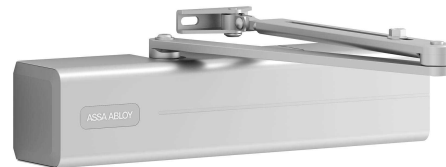
DC340

Rack and pinion

ASSA ABLOY
Opening Solutions

Application:

ASSA ABLOY Door Closers are ideal for almost any structural conditions, whether they are used in public, residential or commercial buildings or on light or heavy doors.



Specification:

- Rack and pinion closer with link arm L190
- Certified in compliance with EN 1154, size 3-6
- For single action doors up to 1400 mm wide
- Can be used with integrated concealed mounting plate, suitable for fire and smoke protection doors
- Can be used for left and right-handed doors
- Link arm height-adjustable up to 14mm
- Closing speed, latching speed and backcheck adjustable via front facing regulating valves
- Thermodynamic valves for consistent performance
- Variable adjustable closing force
- Opening angle up to 180°
- Effective backcheck and latching speed range adjustable
- Large range of applications

Standards:

- Certified in compliance with EN 1154, size 2-6 (link arm) or size 2-4 (guide rail)
- CE Marked
- Suitable for fire and smoke protection doors

Finish:

- Silver EV1Silver EV1
- White, similar to RAL9016
- Brown, similar to RAL8014
- Black, similar to RAL9005
- Customized finishes available on request

Rack and pinion

DC340

Rack and pinion

Variants:

Code	Description
DC340	DC340 R&P DOOR CLOSER SIZE 2-6 (SIZE 1-4 WITH GUIDE RAIL) BC MECHANISM ONLY
DC340/SS	DC340 R&P DOOR CLOSER SIZE 2-6 (SIZE 1-4 WITH GUIDE RAIL)BC MECHANISM & COVER ONLY
DC340DA	DC340+DELAYED ACTION R&P DOOR CLOSER SIZE 2-6 MECHANISM ONLY SILVER
DC340+DA/SS	DC340+DA R&P DOOR CLOSER SIZE 2-6 BC MECHANISM ONLY & SS COVER
DC340A	DC340A R&P DOOR CLOSER SIZE 2-6 BC WITH ARM & BRACKET SILVER
DC340A/SS	DC340A/SS DOOR CLOSER SIZE 2-6 BC WITH ARM & BRACKET & SS COVER
DC340A+DA	DC340A+DELAYED ACTION R&P DOOR CLOSER SIZE 2-6 BC WITH ARM & PA BRACKET
DC340A+DA/SS	DC340A+DELAYED ACTION R&P DOOR CLOSER SIZE 2-6 BC WITH ARM & PA BRACKET
DC340A+DA SS	DRCLSR MECH R&P ADJ 2-6 BC + DA SS
DC340SS	DC340 STANDARD CLOSER 1-4 (2-6) SS
DC340TE/SS	DC340TE R&P CLOSER SIZE 2-6 G460 EL/MECH H/O RAIL SS