

Connoisseur Inline Locking



Features

- Solid die cast construction**
 Heavyweight handle with sturdy feel
- Heavy duty sprung latching wedge**
 Positive click on closing
- Long handle**
 Greater leverage and easy to operate without catching a hand on the window
- Classic design with a contemporary twist**
 Create an elegant and stylish window
- Patented cover caps with colour coordinated finish**
 Perfectly matching components, even down to the smallest details
- Secured By Design**
 Additional peace of mind
- Key clicks into place when inserted**
 Won't fall out of the lock, even when pivoting the lever
- Slotted spindle (40mm version only)**
 Allows cropping to 5mm increments
- Supplied with screw and spindle pack**
 Everything needed for installation included



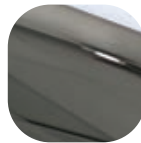
Hardex Chrome



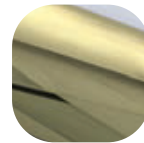
Hardex Satin



White



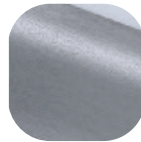
Hardex Bronze



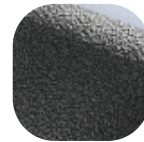
Hardex Gold



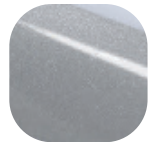
Black



Hardex Graphite



Antique Black



Silver



Anthracite Grey

Connoisseur Inline Locking

Ordering Details

Product

Connoisseur Inline Locking

Finish	Part No.						
Spindle Size	10mm	15mm	20mm	25mm	30mm	35mm	40mm
Hardex Chrome	OC021	OC041	OC061	OC081	OC101	OC121	OC141
Hardex Satin	OC022	OC042	OC062	OC082	OC102	OC122	OC142
Hardex Bronze	OC023	OC043	OC063	OC083	OC103	OC123	OC143
Hardex Gold	OC025	OC045	OC065	OC085	OC105	OC125	OC145
Hardex Graphite	-	OC048	-	-	OC108	OC128	OC148
Antique Black	OC026	OC046	OC066	OC086	OC106	OC126	OC146
White	OA020	OA040	OA060	OA080	OA100	OA120	OA140
Black	OA021	OA041	OA061	OA081	OA101	OA121	OA141
Silver	OA022	OA042	OA062	OA082	OA102	OA122	OA142
Anthracite Grey	OA024	-	OA064	-	OA104	-	OA144

For additional part numbers please contact our sales office.

Technical Information

Corrosion resistance

Meets the requirements of BS EN 1670:2007 Grade 5 (480 hours)

Operation

Endurance tested in excess of 25,000 cycles

Performance

Tested to meet the requirements of PAS 24 as part of a compliant window

Material Specification

Handle Grip and Backplate: High quality Zinc for all Hardex finishes and Antique Black.
High quality Aluminium for White, Black and Silver finishes

Coatings: Hardex Chrome, Satin, Bronze, Gold, Graphite, Antique Black, White, Black and Silver

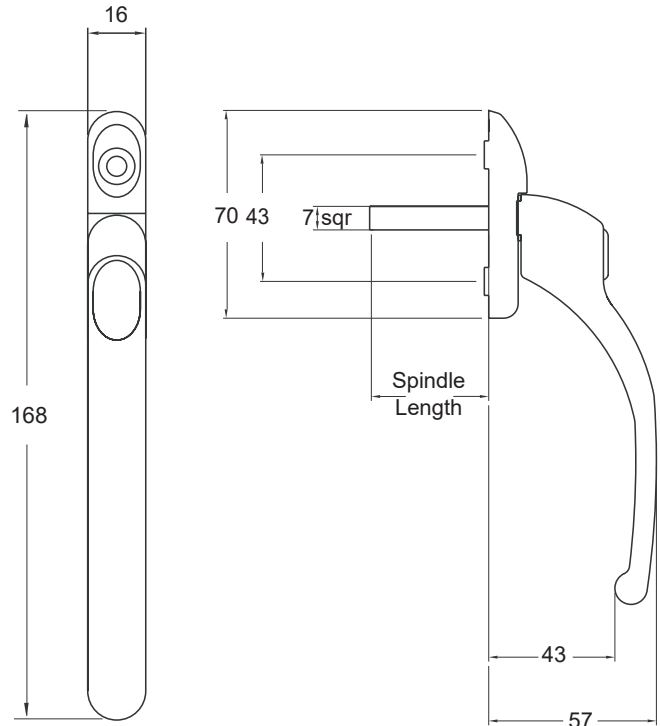
Maintenance

For continued protection of the quality finish and appearance, Fab&Fix advise routine cleaning of all our external hardware. Moving parts should also be lightly lubricated at least twice a year. This procedure is particularly essential if products are used within a 25-mile radius of coastal areas or close proximity to building sites or large industrial areas, where more frequent cleaning may be required to prevent the accumulation of corrosive contaminants.

Packaging

Handles

Individually bagged with screws, key, cover caps and care instructions.
10 handles in an inner box, 60 handles in an outer box.



Front Cover Cap



Rear Cover Cap



Screws x2



All dimensions are in mm and are nominal.
Fab&Fix reserves the right to change specification without notice.
It is the responsibility of the window manufacturer to ensure that the finished product meets any required safety and performance specification.