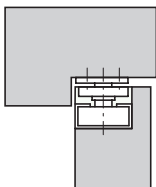
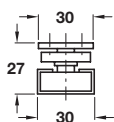
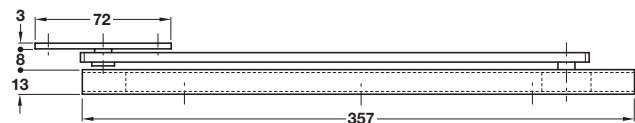


**Mortice overhead limit stay**

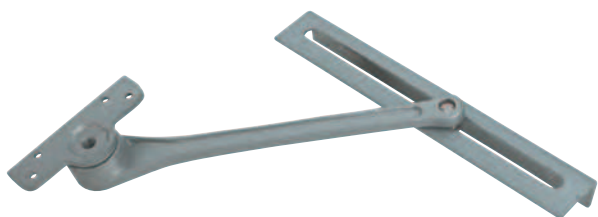


- > To prevent door opening beyond 90°, where there is no stop fitted (not subject to high winds)
- > Suitable for single and double action doors
- > Reversing the channel will allow hold open or non-hold open facility
- > Steel
- > Order fixing screws separately
- > Order qty: 1 pc

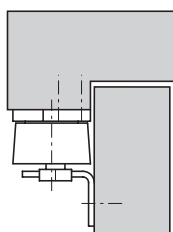
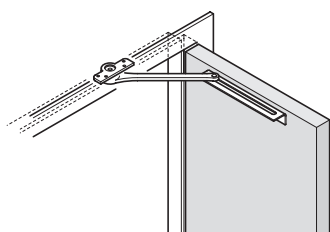
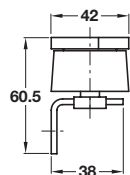
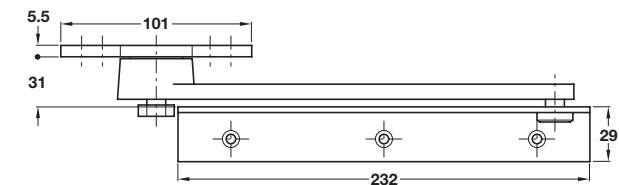


Finish	Cat. No.
Zinc-plated	911.52.149

**Surface overhead friction stay**



- > Heavy duty for outward opening doors
- > Friction controlled by nut on plate
- > Prevents door opening beyond 90°
- > Single action doors only
- > Steel
- > Order fixing screws separately
- > Order qty: 1 pc



Finish	Cat. No.
Zinc-plated	911.52.389

TCH AH-2019, © Hafele U.K. Ltd 2019. Dimensional data not binding. We reserve the right to alter specifications without notice.