

### Craftsman Casement Stay Bar Locking

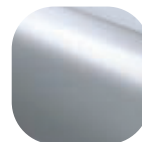


#### Features

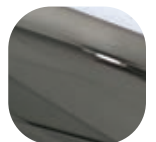
- **Solid die cast Zinc construction**  
Heavyweight stay bar with sturdy feel
- **Classic design with a contemporary twist**  
Create an elegant and stylish window
- **Matching casement fastener available**  
Perfectly matching hardware for every application
- **Supplied with colour matching screws**  
Perfectly matching hardware, even down to the smallest details
- **Key clicks into place when inserted**  
Won't fall out of the lock, even when pivoting the lever
- **Non handed**  
Universal handle suitable for left and right handed windows, reduces stock holding



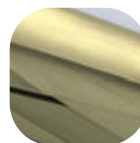
Hardex  
Chrome



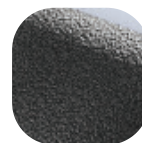
Hardex  
Satin



Hardex  
Bronze



Hardex  
Gold



Antique  
Black



White



Black

### Craftsman Casement Stay Bar Locking

#### Ordering Details

#### Product

#### Craftsman Casement Stay Bar Locking

#### Finish

#### Part No.

|               |       |
|---------------|-------|
| Hardex Chrome | OJ201 |
| Hardex Satin  | OJ202 |
| Hardex Bronze | OJ203 |
| Hardex Gold   | OJ205 |
| Antique Black | OJ206 |
| White         | OJ200 |
| Black         | 8A048 |

For additional part numbers please contact our sales office.

#### Technical Information

##### Corrosion resistance

Meets the requirements of BS EN 1670:2007 Grade 5 (480 hours)

#### Material Specification

Stay Bar and Plates: High quality Zinc for all finishes

Coatings: Hardex Chrome, Satin, Bronze, Gold, Antique Black, White and Black.

#### Maintenance

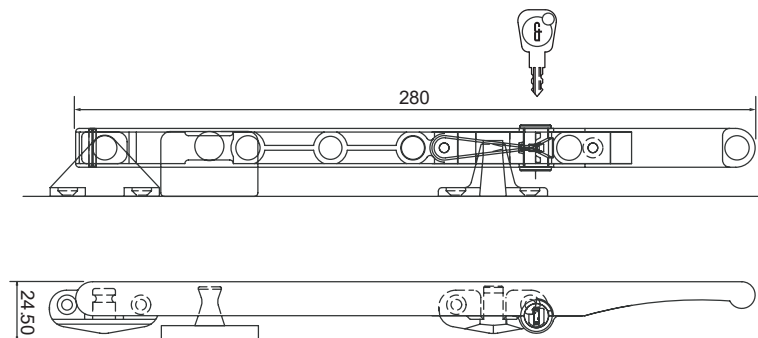
For continued protection of the quality finish and appearance, Fab&Fix advise routine cleaning of all our external hardware. Moving parts should also be lightly lubricated at least twice a year. This procedure is particularly essential if products are used within a 25-mile radius of coastal areas or close proximity to building sites or large industrial areas, where more frequent cleaning may be required to prevent the accumulation of corrosive contaminants.

#### Packaging

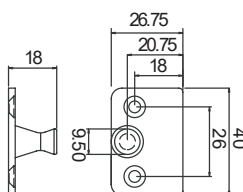
##### Stay Bars

Individually bagged with screws and care instructions.  
40 stay bars in an outer box.

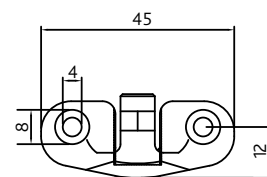
Stay



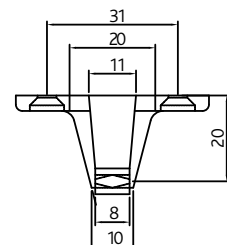
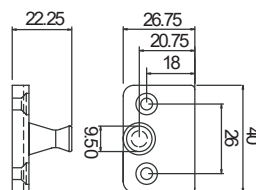
0° Peg Plate



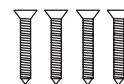
Hook Plate



9° Peg Plate



Screws x 4



All dimensions are in mm and are nominal.  
Fab&Fix reserves the right to change specification without notice.  
It is the responsibility of the window manufacturer to ensure that the finished product meets any required safety and performance specification.