



EVVA SKI Internal Scandinavian Thumbturn Cylinder



Description

This Evva SKI internal Scandinavian thumbturn cylinder is suitable for use with external SKA cylinders (sold separately) and is available in both 5 and 6 pin styles. As it is an internal cylinder there are 2 accessible holes to allow bolts to be inserted to screw into the back of the SKA External Scandinavian Cylinder on the other side of the lock case.



5 Pin Mechanism

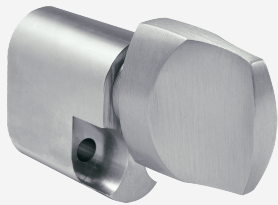


6 Pin Mechanism

Features

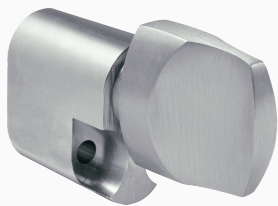
- Allows exit without a key from the inside if fitted correctly
- Fitted with an FKN turn as standard
- For use with SKA External Scandinavian Cylinders
- Available in both 5 pin & 6 pin versions

Product Table



L24768

5 Pin (25.6mm)



L24769

6 Pin (30.6mm)