

HUSKYFOLD 30

Folding hardware system for internal, wooden doors weighing up to 30kg. Ideal for DIY projects and professional installations to create folding room partitions and wardrobes in the home.



Features & Benefits

- Doors can fold to one or both sides of the opening. When open, the doors stack neatly to one side.
- Available in kit pack format to cater for various door configurations. A fittings kit is also available for when additional doors are required.
- Extremely easy to install - designed with no routing and high quality components to allow for easy hanging of doors.
- Hinge handle included in the kit pack for easy closure of the doors.
- Designed with high quality hinges - reducing the clearance between the doors to 2mm.
- Designed without the need for a guide channel, allowing for a clear walk way between rooms.
- Flush bolts are available as an optional extra to securely hold the door in the closed position.

P C Henderson Ltd
Durham Road, Bowburn,
County Durham,
DH6 5NG

UK SALES
T: +44 (0) 191 377 7345
E: sales@pchenderson.com
W: www.pchenderson.com

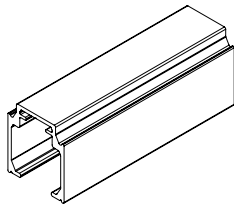
HENDERSON

Product Specification

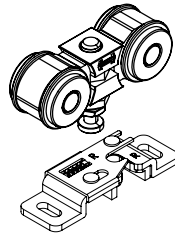
Product Code	Door Configuration	Track Length	Max. Door Height	Max. Door Width	Door Thickness Range	Max. Door Weight
HF30/2/0	2+0	1800mm	2700mm	850mm	20-44mm	30kg
HF30/2/1	2+1	2700mm	2700mm	850mm	20-44mm	30kg
HF30/2/2	2+2	3500mm	2700mm	850mm	20-44mm	30kg
HF30/3/0	3+0	2700mm	2700mm	850mm	20-44mm	30kg
HF30/3/1	3+1	3500mm	2700mm	850mm	20-44mm	30kg
HF30/4/0	4+0	3500mm	2700mm	850mm	20-44mm	30kg

Kit Contents

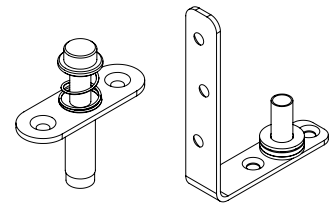
Component	Product Code	Quantity (Door Configurations)					
		2+0	2+1	2+2	3+0	3+1	4+0
Track	280/**HP	1	1	1	1	1	1
Hanger Assembly	HF/284	1	1	2	1	1	2
Pivot Set	HF/PIVOT	1	2	2	1	2	1
Hinge Handle Set	HF/282H	1	1	2	1	1	2
Hinge Set	HF/282	0	0	0	1	1	1



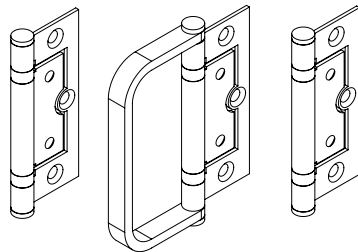
Track
280/HP



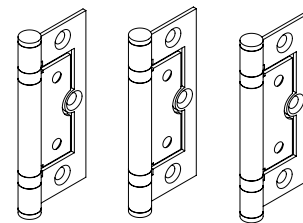
Hanger Assembly
HF/284



Pivot Set
HF/PIVOT



Hinge Handle Set
HF/282H



Hinge Set
HF/282

Optional Accessories

Component	Description	Short Code
Fittings Kit	For an additional 2 doors	HF30/2/0/TL
	For an additional 4 doors	HF30/4/0/TL
Flush Bolt	Non locking flushbolt - 110mm high. Securely holds the doors into the closed position.	FB110S

Flush Bolt Calculator

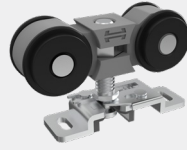
Door Configuration	No. of Flushbolts Required
2+0	1
2+1	1
2+2	2
3+0	1
3+1	2
4+0	2

HUSKYFOLD 30

Product Features

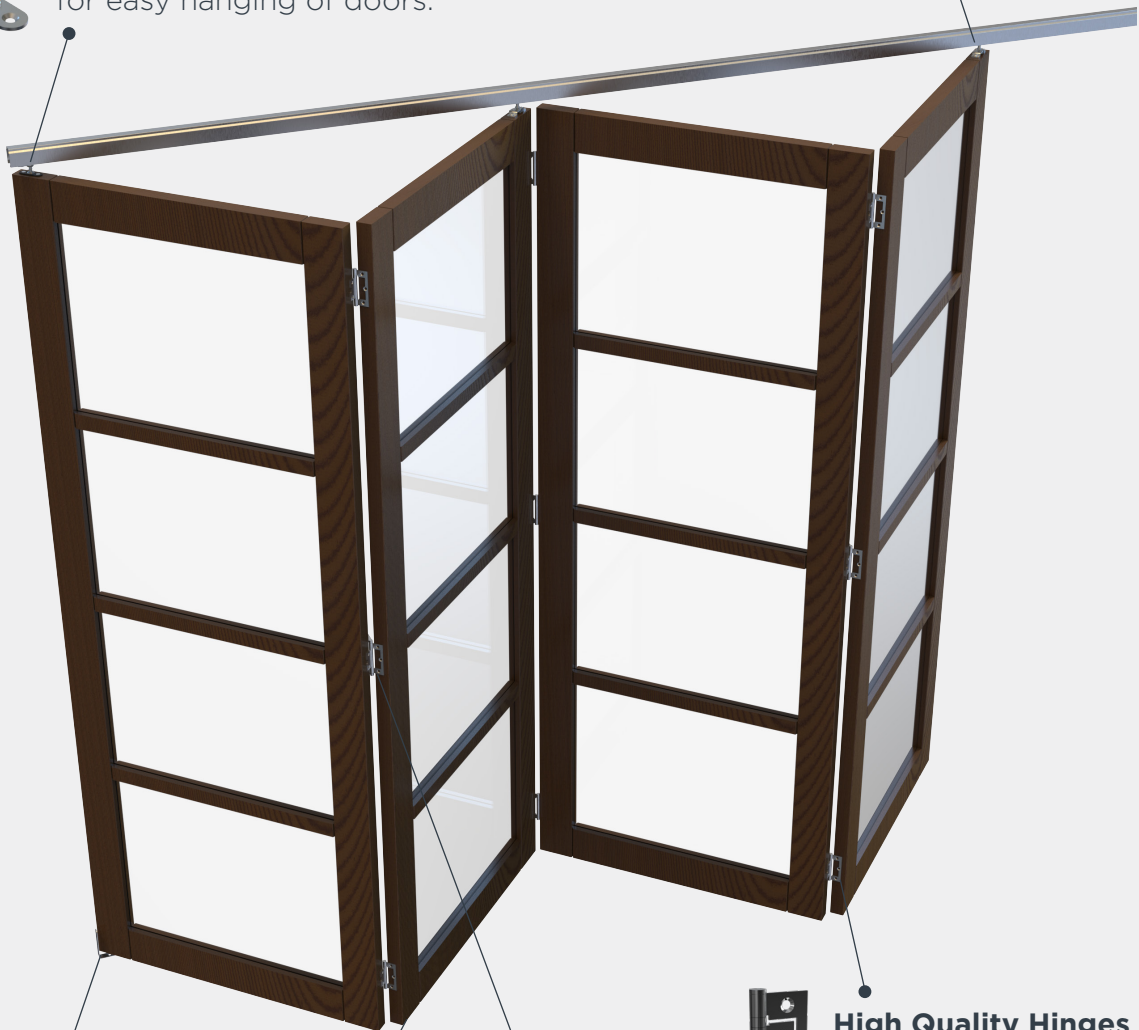
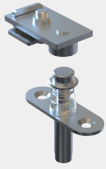
Fast Fix Hanger Assembly

for rapid installation. Simply slide the protruding legde to one side, allowing for easy hanging of the doors.



Spring Loaded Top Pivot

for easy hanging of doors.



Concealed Bottom Pivot

for improved door rotation.



High Quality Hinges

for minimal clearance between the doors.



Hinge Handle

for easy closure of doors.



No Bottom Channel Required

allowing for a seamless walkway between rooms.

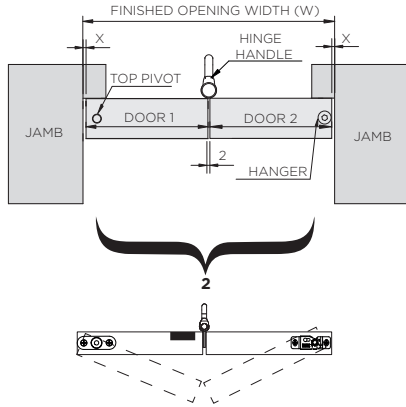
P C Henderson Ltd
Durham Road, Bowburn,
County Durham,
DH6 5NG

UK SALES
T: +44 (0) 191 377 7345
E: sales@pchenderson.com
W: www.pchenderson.com

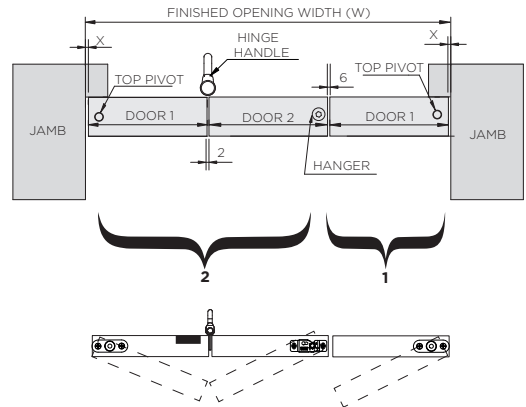
HENDERSON

Door Configurations

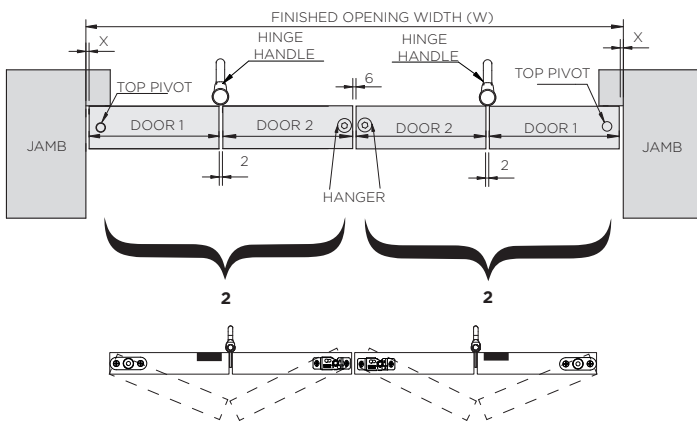
2+0



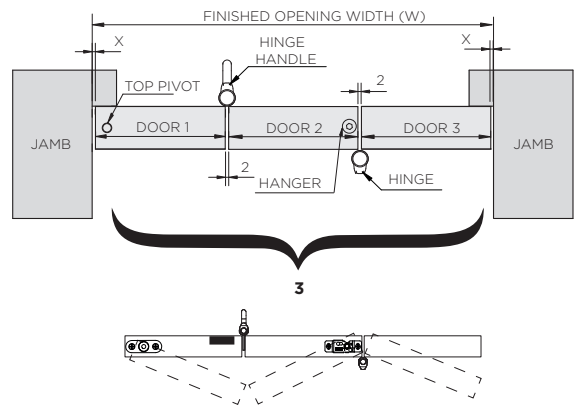
2+1



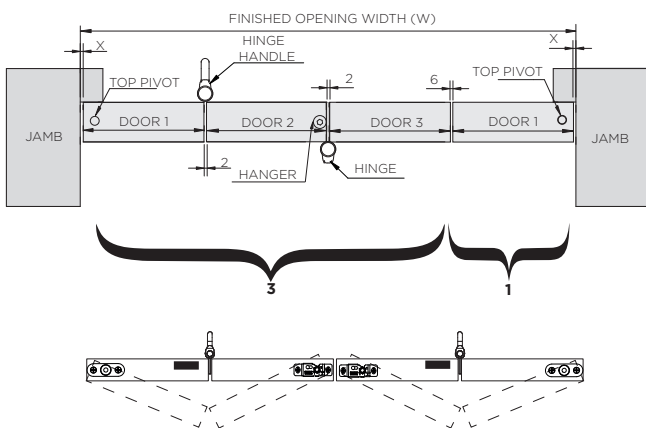
2+2



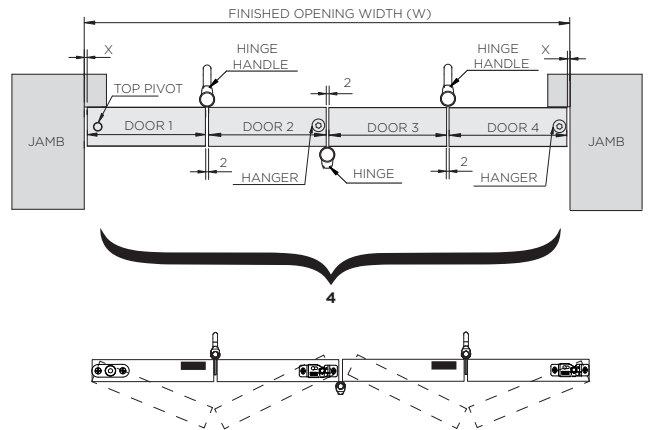
3+0



3+1



4+0

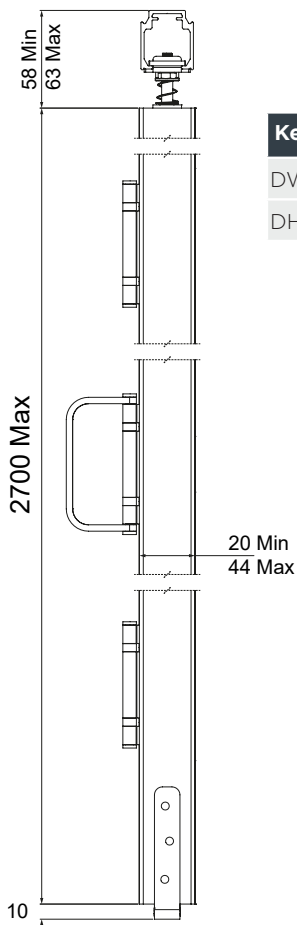


Door Thickness	X (Door to jamb clearance)
0 - 35mm	6mm
36 - 40mm	8mm
41 - 44mm	10mm

■ = Flush Bolt Location

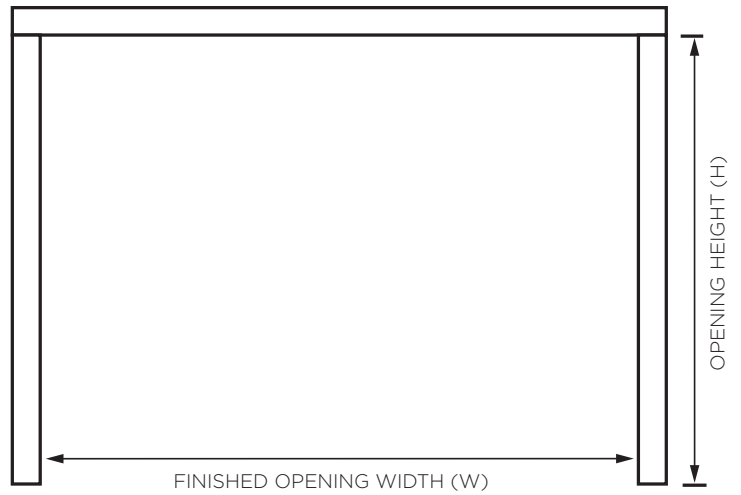
Product Diagrams

Section View



Key	
DW	Door Width
DH	Door Height

Elevation View



Opening Size Formula

Door Configuration	Opening Width (W)			Opening Height (H)
	0-35mm Door Thickness	36-40mm Door Thickness	41-44mm Door Thickness	
2+0	$(DW \times 2) + 14$	$(DW \times 2) + 18$	$(DW \times 2) + 22$	DH + 70
2+1	$(DW \times 3) + 20$	$(DW \times 3) + 24$	$(DW \times 3) + 28$	
2+2	$(DW \times 4) + 22$	$(DW \times 4) + 26$	$(DW \times 4) + 30$	
3+0	$(DW \times 3) + 16$	$(DW \times 3) + 20$	$(DW \times 3) + 24$	
3+1	$(DW \times 4) + 22$	$(DW \times 4) + 26$	$(DW \times 4) + 30$	
4+0	$(DW \times 4) + 18$	$(DW \times 4) + 22$	$(DW \times 4) + 26$	

Flush Bolt Routing Detail

